

RR14 EVO-2/400 product guide

Promax

RR14 EVO-2/400 Road Rail Access Platform

RR14 EVO-2/400 Hybrid Road Rail Access Platform

issue 07-RR14

contents

Introduction	03
Features	04
Technical data RR14 EVO-2/400	05
Technical data RR14 EVO-2/400 HYBRID	06
Working envelope 400kg	07
Working envelope 300kg & 400kg HYBRID	08

Promax Access Ltd

Unit 8, Acorn Phase 3,
High Street, Grimethorpe,
Barnsley, South Yorkshire S72 7BD

Telephone: 01226 716657
Fax: 01226 716658

Email: sales@promaxaccess.com
Web: www.promaxaccess.com

Promax Access Limited offer a full range of powered access platforms. This catalogue highlights Road Rail Access.

To learn more about other platforms available, please visit our web site at www.promaxaccess.com

RR14 EVO-2/400

promax access limited

The latest RR14 EVO-2/400 Road-Rail Access Platform is a self-propelled platform specifically designed and developed as a road rail machine and first introduced to the UK in 2003.

The articulating & telescopic boom lift allows for very flexible use on road or rail, whilst on rail the unit offers excellent side reach and lifting capacity due to its automatic self-levelling turret that allows the machine to operate on a 200mm cant, and incorporates a self-locking oscillating axle.

The spacious cage allows handling of large and heavy tools utilising the 3 person, 400kg maximum cage capacity, and greater work place versatility and placement with the fly-jib & 90+90 degrees of cage rotation.

The auxiliary emergency diesel engine is equipped with a hydraulic pump enabling the operator to carry out all machine functions and vacate the rail tracks in any contingency.



RR14 EVO-2/400 hydrostatic

RR14 EVO-2/400 Features

- Hydrostatic drive - 4 driven rail wheels
- 4x4 transmission and locking differential
- 3rd & 4th rail compliant
- 3 person - 400kg cage capacity
- Mechanical ALO locking device – either side - NWR Approved
- Intuitive control system – Simple to use
- Emergency auxiliary on board diesel engine can carry out all machine functions*
- Automatic levelling turret
- High-speed travel on rails of 8mph
- Ready for towing or propelling a 2.5t trailer attachment
- Full UK VAB approval



RR14 EVO-2/400 technical data - on the railway

max. working height	14.40m
max. cage floor height	12.40m
max. lateral outreach (static) 300Kg	9.30m
max. lateral outreach (static) 400Kg	6.30m
- while driving (dynamic) 300 & 400Kg	6.30m
turret rotation	400°/deg n.c
basket rotation	°/deg 90+90
fly jib length	1.50m
length in stowed position	min 6.35m
min.stowed width	2.36m
min.stowed height	3.00m
driving speed	12 Km/h
minimum working radius	40m
max operating cant	200mm
max working gradient	1:16
tier 5 main engine Hatz 3h50TICD	KW 43.7
auxiliary engine power Hatz 1B40	KW6.5 9Hp
basket swl Max	400kg

active oscilating axle	yes
max. allowed wind speed	45 Km/h
basket dimensions	1.2 x 1.5 x 1.14m
tyre size	12.5 x 18"
oil reservoir	95L
fuel reservoir	80L
electric circuit	24 Vdc

STANDARD EQUIPMENT

- Hydrostatic drive - 4 wheels
- Full UK VAB Approval
- Automatic levelling of the upper platform structure
- Interlock device to enable platform travel under live lines
- 180 degree mechanical locking device to allow the platform use with the adjacent line open to the railway traffic - NWR Approved
- Towing hitch and lights pre-arrangement for small trailers
- Auxiliary diesel engine for emergency use
- Easy to position for on and off tracking
- Hydraulic oil cooler to monitor the hydraulic circuit temp
- Fully compliant with the European directive EN280



RR14 EVO-2/400 Hybrid technical data - on the railway

max. working height	14.40m
max. cage floor height	12.40m
max. lateral outreach (static) 400Kg	9.30m
- while driving (dynamic) 400Kg	6.30m
turret rotation	400°/deg n.c
basket rotation	°/deg 90+90
fly jib length	1.50m
length in stowed position	min 6.35m
min.stowed width	2.36m
min.stowed height	3.00m
driving speed	12 Km/h
minimum working radius	40m
max operating cant	200mm
max working gradient	1:16
tier 5 main engine Hatz 3h50TICD	KW 43.7
lithium battery	400Ah
basket swl Max	400kg

active oscilating axle	yes
max. allowed wind speed	45 Km/h
basket dimensions	1.2 x 1.5 x 1.14m
tyre size	12.5 x 18"
oil reservoir	95L
fuel reservoir	80L
electric circuit	24 Vdc

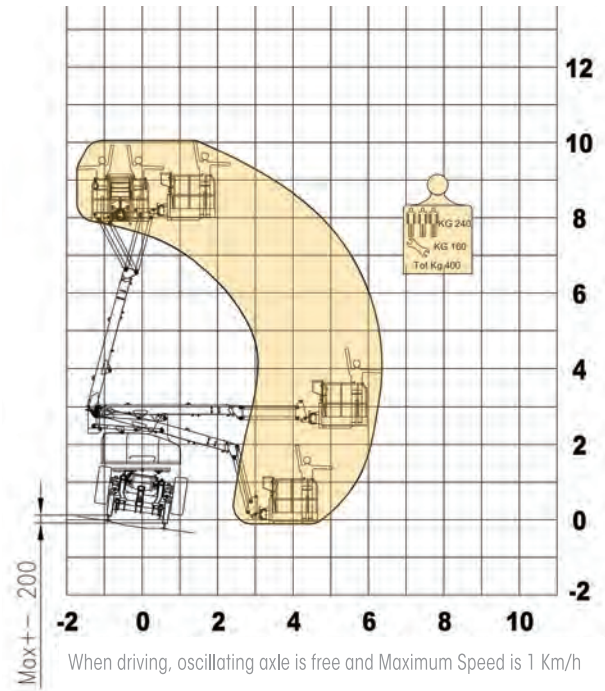
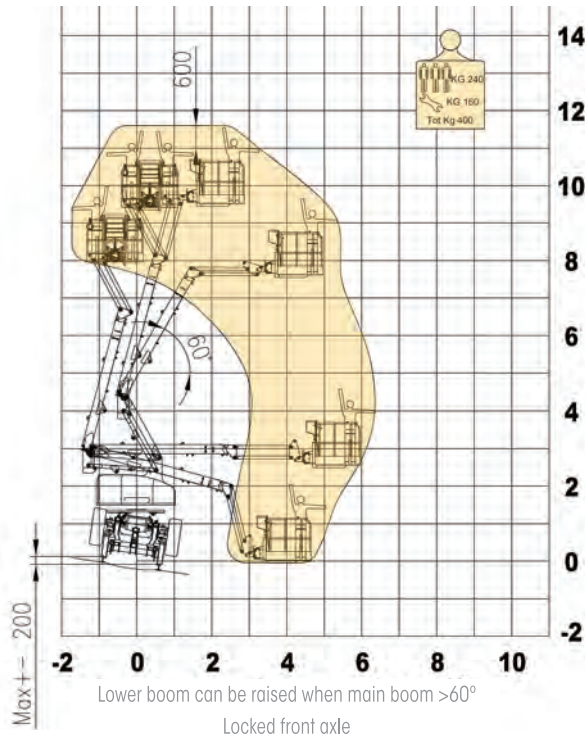
STANDARD EQUIPMENT

- Hydrostatic drive - 4 wheels
- Full UK VAB Approval
- Automatic levelling of the upper platform structure
- Interlock device to enable platform travel under live lines
- 180 degree mechanical locking device to allow the platform use with the adjacent line open to the railway traffic - NWR Approved
- Towing hitch and lights pre-arrangement for small trailers
- Easy to position for on and off tracking
- Hydraulic oil cooler to monitor the hydraulic circuit temp
- Fully compliant with the European directive EN280



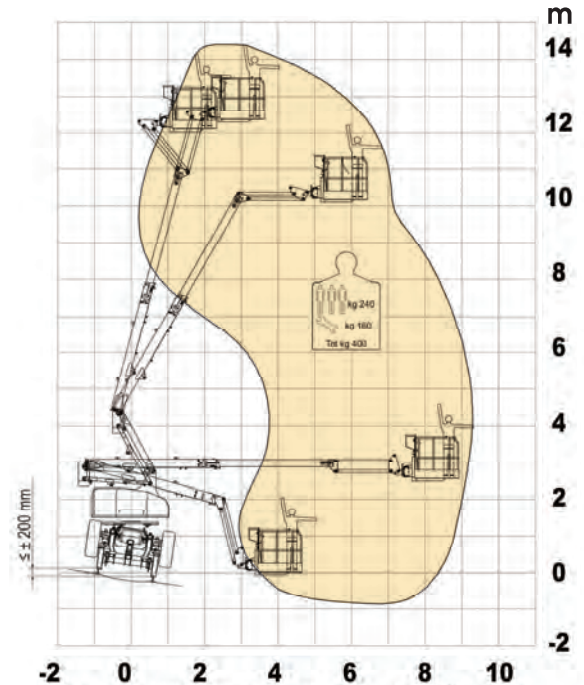
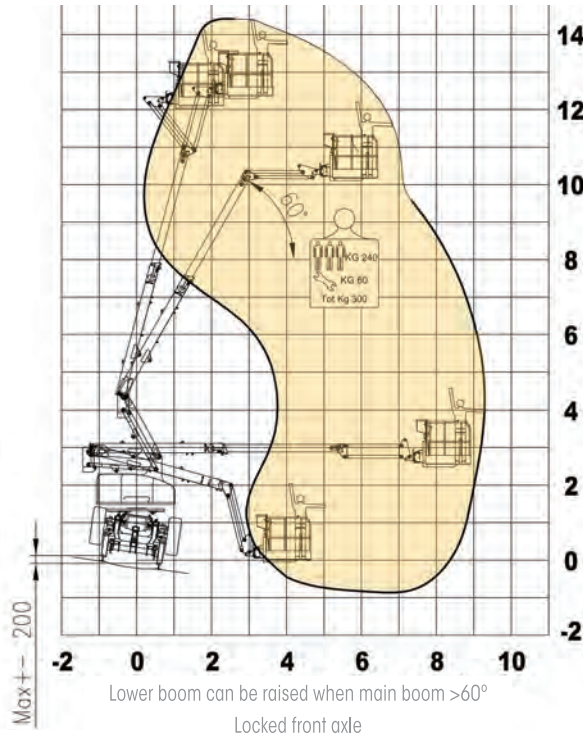
working envelopes

RR14 EVO-2/400kg on rail



RR14 EVO-2/400 300kg on rail

RR14 Evo-2/400 Hybrid 400kg on rail



Promax Access Ltd

Unit 8, Acorn Phase 3,
High Street, Grimethorpe,
Barnsley, South Yorkshire S72 7BD

Telephone: 01226 716657

Fax: 01226 716658

Email: sales@promaxaccess.com

Web: www.promaxaccess.com

www.promaxaccess.com

